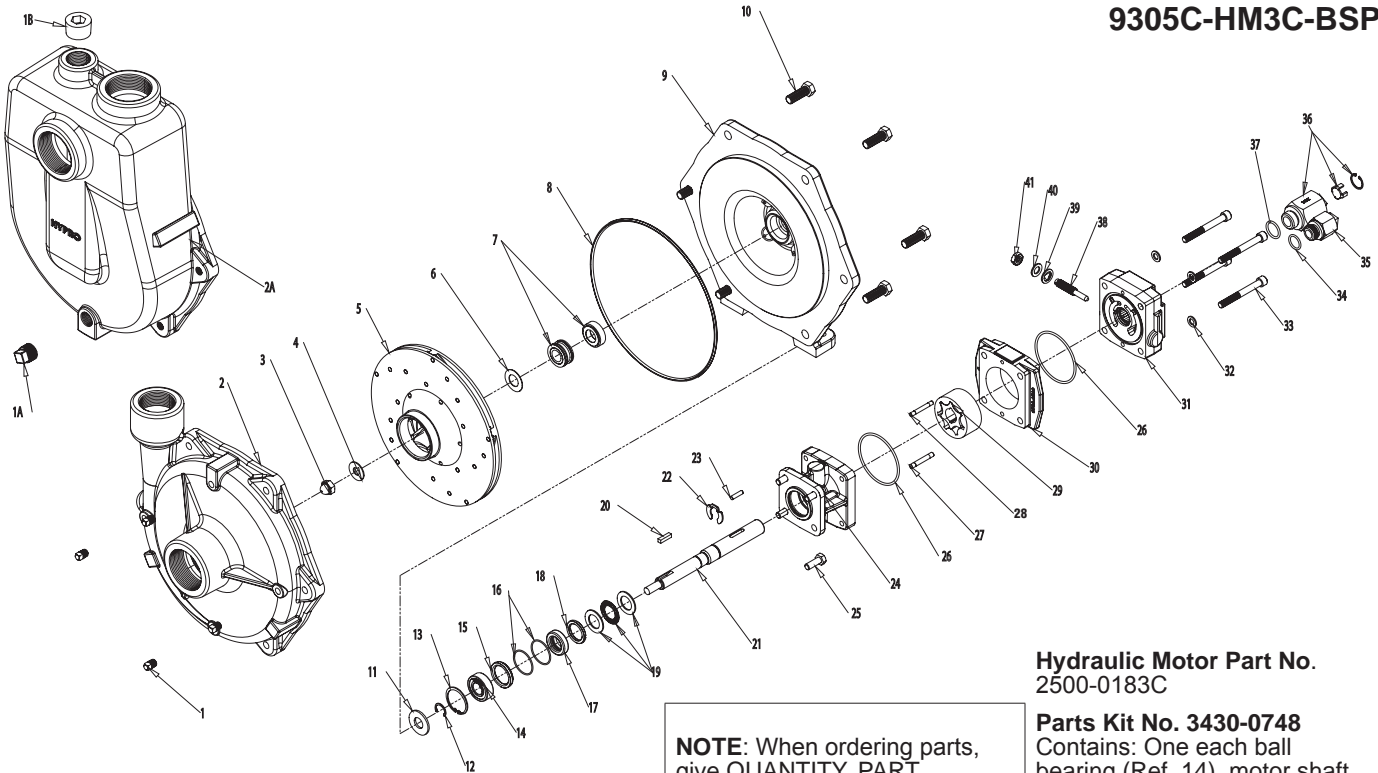


Replacement Parts

The following drawings show the pumps and their replacement parts. **Only genuine replacement parts should be used. Failure to follow this warning can result in damage to property, serious injury or death.** If the pump malfunctions or is defective, it should be sent back to Hypro for service.

9305C-HM3C, 9305C-HM3C-SP, 9305C-HM3C-BSP



Silicon Carbide Seal Kit No. 3430-0601

Contains one each:
Mechanical seal (Ref. 7) and
o-ring (Ref. 8).

Repair Parts Kit No. 3430-0500

Contains one each:
One o-ring (Ref. 8), one rubber
gasket (Ref. 6), one mechanical
seal (Ref. 7).

NOTE: When ordering parts, give QUANTITY, PART NUMBER, DESCRIPTION, and COMPLETE MODEL NUMBER. Reference number are used ONLY to identify part in the drawing and are NOT to be used as order numbers.

Hydraulic Motor Part No. 2500-0183C

Parts Kit No. 3430-0748

Contains: One each ball bearing (Ref. 14), motor shaft seal (Ref. 17), thread seal gasket (Ref. 39), two cartridge o-rings (Ref. 16), and washer (Ref. 40); two each motor housing o-rings (Ref. 26), and port adapter o-rings (Ref. 34 & 37).

| Ref. No. | Qty. Req'd. | Part No. | Description |
|----------|-------------|--------------|--|
| 1 | 4 | 2406-0007 | Drain/Vent Plug |
| 1A | 1 | 2406-0002 | 1/2" NPT Drain Plug (SP Model Only) |
| 1B | 1 | 2406-0034 | 1" NPT Prime Port Plug (SP Model Only) |
| 1B | 1 | 2406-0036 | 1" BSP Prime Port Plug (SP Model Only) |
| 2 | 1 | 0152-9200C | Pump Casing |
| 2A | 1 | 3430-0481SP | Self-Priming Chamber (SP Model Only) Includes Stainless Wear Ring, Plugs & O-Ring |
| 2A | 1 | 3430-0481BSP | Self-Priming Chamber (BSP Model Only) Includes Stainless Wear Ring, Plugs & O-Ring |
| 3 | 1 | 2253-0002 | Impeller Nut |
| 4 | 1 | 2270-0071 | Washer |
| 5 | 1 | 0403-9200P1 | Impeller |
| 6 | 1 | 1700-0100 | Rubber Gasket |
| 7 | 1 | 2120-0009 | Mechanical Seal (Viton/Ceramic) (Std. 9305C) |
| 7 | 1 | 3430-0601 | Mechanical Seal (Silicon Carbide) (Optional) |
| 8 | 1 | 1720-0180 | O-Ring |
| 9 | 1 | 0752-9200C | Mounting Flange |
| 10 | 6 | 2210-0086 | Hex Head Cap Screw |
| 11 | 1 | 1410-0056 | Slinger Ring |
| 12 | 1 | 1810-0014 | Snap Ring |
| 13 | 1 | 1820-0013 | Retaining Ring |
| 14 | 1 | 2000-0010 | Ball Bearing |
| 15 | 1 | 1410-0131 | Cartridge, Front |
| 16 | 2 | 1720-0268 | O-Ring |
| 17 | 1 | 3430-0748 | Lip Seal |
| 18 | 1 | 1410-0130 | Seal Spacer |

| Ref. No. | Qty. Req'd. | Part No. | Description |
|----------|-------------|-------------|---|
| 19 | 1 | 2029-0014 | Thrust Bearing Assembly |
| 20 | 1 | 1610-0053 | Square Key |
| 21 | 1 | 3430-0856 | Shaft |
| 22 | 1 | 1810-0026 | Snap Ring |
| 23 | 1 | 1610-0055 | Roll Pin |
| 24 | 1 | 0150-2500C | Motor Body (includes needle bearing) |
| 25 | 4 | 2210-0005 | Hex Head Cap Screw |
| 26 | 2 | 1720-0110 | O-Ring |
| 27 | 1 | 1600-0052 | Dowel Pin |
| 28 | 1 | 1600-0068 | Dowel Pin |
| 29 | 1 | 3900-0024 | Gerotor |
| 30 | 1 | 0702-2500C1 | Gerotor Housing 1" wide |
| 31 | 1 | 0254-2500C2 | Motor End Plate (includes needle bearing) |
| 32 | 4 | 2270-0039 | Washer |
| 33 | 4 | 2220-0044 | Cap Screw |
| 34 | 1 | 1720-0108 | O-Ring |
| 35 | 1 | 3360-0021A | Pressure Port Adapter (includes o-ring) |
| 36 | 1 | 3320-0051A | Tank Port Adapter (includes o-ring) |
| 37 | 1 | 1720-0262 | O-ring |
| 38 | 1 | 3220-0029 | Bypass adjusting Screw |
| 39 | 1 | 1700-0047 | Gasket |
| 40 | 1 | 2270-0027 | Washer |
| 41 | 1 | 2250-0038 | Lock Nut |