

# HYPRO®

## BELT DRIVEN CENTRIFUGAL PUMPS

Series 9400

**Features:**

- Available in cast iron, polypropylene and 316 stainless steel
- Drive: 12-groove belt
- Spring-loaded belt tensioner
- Stainless steel wear ring & pump shaft, standard
- Port Sizes: 9402 models - 1-1/4" NPT inlet, 1" NPT outlet  
9403 models - 1-1/2" NPT inlet, 1-1/4" NPT outlet
- 220 x 200 universal flange available (U)
- Max. fluid temperature: 140°
- Impeller: Cast iron models - Nylon; Poly & Stainless Steel models - Polypropylene
- Pump shaft rotation: Counter clockwise when looking at shaft end
- Pump seals: Viton®/ceramic standard; Life Guard silicon carbide (B) available
- Weight: 40-45 lbs.



**CATALOG IS LIST PRICE  
PLEASE APPLY DISCOUNT**

**Cast Iron Belt-Driven Centrifugal Pumps**

PART NUMBER	MAX GPM	MAX PSI	MAX RPM	PORT SIZES	PUMP SEALS	PTO OUTPUT	LIST PRICE
9402C-540	76	95	600	1-1/4" FPT Inlet x 1" FPT Outlet	Viton® / Ceramic	1 3/8" female, 6-spline shaft	\$1,522.97
9402C-540Q	76	95	600	1-1/4" FPT Inlet x 1" FPT Outlet	Viton® / Ceramic	1 3/8" 6-spline quick coupler	\$1,548.42
9402C-540S	76	95	600	1-1/4" FPT Inlet x 1" FPT Outlet	Viton® / Ceramic	1" solid shaft	\$1,548.42
9402C-1000	76	95	1000	1-1/4" FPT Inlet x 1" FPT Outlet	Viton® / Ceramic	1 3/8" female, 21-spline shaft	\$1,546.21
9402C-1000L	76	95	1000	1-1/4" FPT Inlet x 1" FPT Outlet	Viton® / Ceramic	1 3/4" female, 20-spline shaft	\$1,611.51
9402C-1000S	76	95	1000	1-1/4" FPT Inlet x 1" FPT Outlet	Viton® / Ceramic	1" solid shaft	\$1,537.36
9403C-540	140	104	600	1-1/2" FPT Inlet x 1-1/4" FPT Outlet	Viton® / Ceramic	1 3/8" female, 6-spline shaft	\$1,712.23
9403C-540Q	140	104	600	1-1/2" FPT Inlet x 1-1/4" FPT Outlet	Viton® / Ceramic	1 3/8" 6-spline quick coupler	\$1,737.69
9403C-540S	140	104	600	1-1/2" FPT Inlet x 1-1/4" FPT Outlet	Viton® / Ceramic	1" solid shaft	\$1,737.69
9403C-540S-B	140	104	600	1-1/2" FPT Inlet x 1-1/4" FPT Outlet	Silicon Carbide	1" solid shaft	\$1,884.89
9403C-1000	140	104	1000	1-1/2" FPT Inlet x 1-1/4" FPT Outlet	Viton® / Ceramic	1 3/8" female, 21-spline shaft	\$1,746.54
9403C-1000L	140	104	1000	1-1/2" FPT Inlet x 1-1/4" FPT Outlet	Viton® / Ceramic	1 3/4" female, 20-spline shaft	\$1,811.84
9403C-1000S	140	104	1000	1-1/2" FPT Inlet x 1-1/4" FPT Outlet	Viton® / Ceramic	1" solid shaft	\$1,737.69
9403C-1000S-U	140	104	1000	220 x 200 Universal Flange	Viton® / Ceramic	1" solid shaft	\$1,797.45

**Stainless Steel Belt-Driven Centrifugal Pumps**

PART NUMBER	MAX GPM	MAX PSI	MAX RPM	PORT SIZES	PUMP SEALS	PTO OUTPUT	LIST PRICE
9403S-540	140	104	600	1-1/2" FPT Inlet x 1-1/4" FPT Outlet	Viton® / Ceramic	1 3/8" female, 6-spline shaft	\$2,463.75
9403S-540Q	140	104	600	1-1/2" FPT Inlet x 1-1/4" FPT Outlet	Viton® / Ceramic	1 3/8" 6-spline quick coupler	\$2,489.21
9403S-540S	140	104	600	1-1/2" FPT Inlet x 1-1/4" FPT Outlet	Viton® / Ceramic	1" solid shaft	\$2,489.21
9403S-1000	140	104	1000	1-1/2" FPT Inlet x 1-1/4" FPT Outlet	Viton® / Ceramic	1 3/8" female, 21-spline shaft	\$2,489.21
9403S-1000L	140	104	1000	1-1/2" FPT Inlet x 1-1/4" FPT Outlet	Viton® / Ceramic	1 3/4" female, 20-spline shaft	\$2,551.19
9403S-1000S	140	104	1000	1-1/2" FPT Inlet x 1-1/4" FPT Outlet	Viton® / Ceramic	1" solid shaft	\$2,489.21

**Polypropylene Belt-Driven Centrifugal Pumps**

PART NUMBER	MAX GPM	MAX PSI	MAX RPM	PORT SIZES	PUMP SEALS	PTO OUTPUT	LIST PRICE
9403P-540	91	83	600	1-1/2" FPT Inlet x 1-1/4" FPT Outlet	Viton® / Ceramic	1 3/8" female, 6-spline shaft	\$1,887.11
9403P-540Q	91	83	600	1-1/2" FPT Inlet x 1-1/4" FPT Outlet	Viton® / Ceramic	1 3/8" 6-spline quick coupler	\$1,914.78
9403P-540S	91	83	600	1-1/2" FPT Inlet x 1-1/4" FPT Outlet	Viton® / Ceramic	1" solid shaft	\$1,914.78
9403P-1000	86	83	1000	1-1/2" FPT Inlet x 1-1/4" FPT Outlet	Viton® / Ceramic	1 3/8" female, 21-spline shaft	\$1,914.78
9403P-1000L	86	83	1000	1-1/2" FPT Inlet x 1-1/4" FPT Outlet	Viton® / Ceramic	1 3/4" female, 20-spline shaft	\$1,982.29
9403P-1000S	86	83	1000	1-1/2" FPT Inlet x 1-1/4" FPT Outlet	Viton® / Ceramic	1" solid shaft	\$1,914.78

**Self-Priming Cast Iron Belt-Driven Centrifugal Pumps**

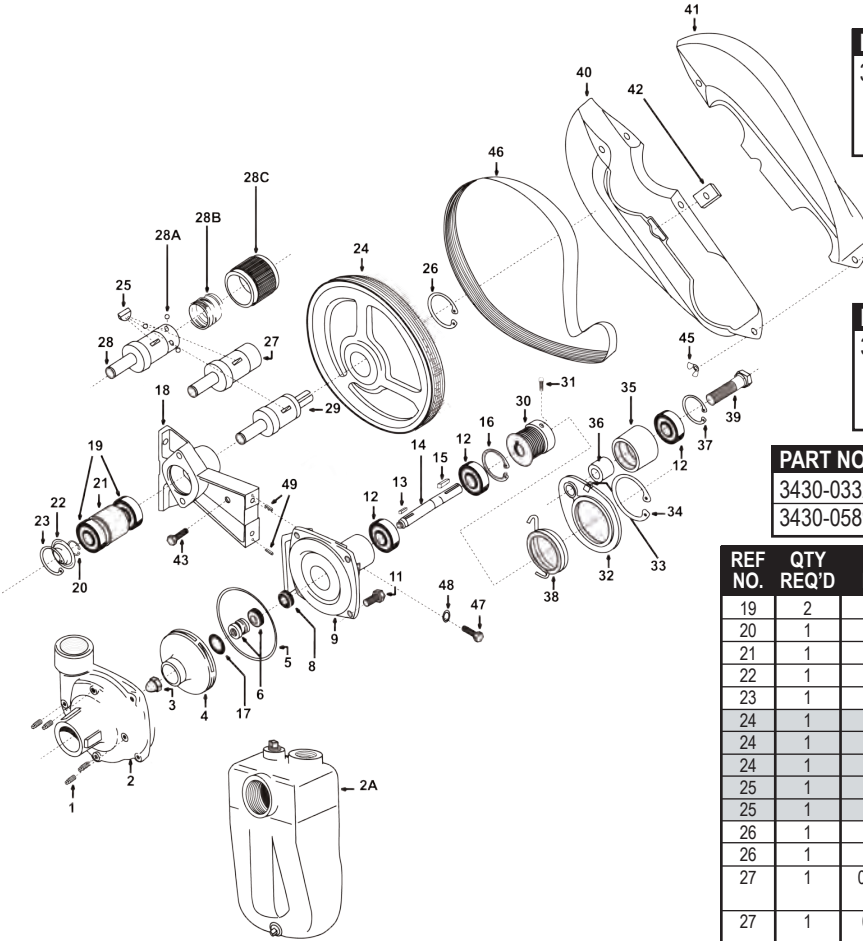
PART NUMBER	MAX GPM	MAX PSI	MAX RPM	PORT SIZES	PUMP SEALS	PTO OUTPUT	LIST PRICE
9403C-540-SP	120	99	600	1-1/2" FPT Inlet x 1-1/4" FPT Outlet	Viton® / Ceramic	1 3/8" female, 6-spline shaft	\$2,254.57
9403C-540Q-SP	120	99	600	1-1/2" FPT Inlet x 1-1/4" FPT Outlet	Viton® / Ceramic	1 3/8" 6-spline quick coupler	\$2,277.81
9403C-540S-SP	120	99	600	1-1/2" FPT Inlet x 1-1/4" FPT Outlet	Viton® / Ceramic	1" solid shaft	\$2,277.81
9403C-1000-SP	120	99	1000	1-1/2" FPT Inlet x 1-1/4" FPT Outlet	Viton® / Ceramic	1 3/8" female, 21-spline shaft	\$2,277.81
9403C-1000L-SP	120	99	1000	1-1/2" FPT Inlet x 1-1/4" FPT Outlet	Viton® / Ceramic	1 3/4" female, 20-spline shaft	\$2,344.22

**9402C-540**

RPM	GPM at 20 PSI	GPM at 30 PSI	GPM at 40 PSI	GPM at 50 PSI	GPM at 60 PSI	GPM at 70 PSI	GPM at 80 PSI	GPM at 90 PSI
450	61	58	50	36				
500	67	66	62	56	42			
540	71	71	70	65	58	44		
600	76	76	76	75	73	66	56	42

**9402C-1000**

RPM	GPM at 20 PSI	GPM at 30 PSI	GPM at 40 PSI	GPM at 50 PSI	GPM at 60 PSI	GPM at 70 PSI	GPM at 80 PSI	GPM at 90 PSI	GPM at 100 PSI
800	68	67	64	57	41				
900	74	74	73	71	64	54	41		
1000	76	76	76	76	76	72	65	56	43



PART NO.	DESCRIPTION	LIST PRICE
3430-0476	<b>Repair Kit For 540 RPM Drives</b> consists of: (1) Poly V-Belt (Ref. 46), (1) O-ring (Ref. 5), (1) Mechanical Seal (Ref. 6), (1) Gasket (Ref. 17)	<b>\$186.25</b>

**CATALOG IS LIST PRICE  
PLEASE APPLY DISCOUNT**

PART NO.	DESCRIPTION	LIST PRICE
3430-0477	<b>Repair Kit For 1000 RPM Drives</b> consists of: (1) Poly V-Belt (Ref. 46), (1) O-ring (Ref. 5), (1) Mechanical Seal (Ref. 6), (1) Gasket (Ref. 17)	<b>\$173.58</b>

PART NO.	DESCRIPTION	LIST PRICE
3430-0332	<b>Mechanical Seal Kit</b> Includes Items 5, 6 & 17	<b>\$75.70</b>
3430-0589	<b>Silicon Carbide Seal Kit</b> Includes Items 5 & 6	<b>\$293.94</b>

REF NO.	QTY REQ'D	PART NO.	DESCRIPTION	LIST PRICE
1	4	2406-0016	Drain Plug - Replaced 2406-0007	\$11.10
2	1	0150-9000C	Pump Casing (Model 9403C)	\$305.34
2	1	0150-9000S1	Pump Casing (Model 9403S)	\$537.20
2	1	0150-9200C	Pump Casing (Model 9402C)	\$337.02
2A	1	3430-0480SP	Pump Casing (Model 9403C-SP)	\$466.25
3	1	2253-0002	Impeller Nut	\$7.39
3	1	3430-0825	Impeller Nut (Model 9403S)	\$37.31
4	1	0401-9100P	Impeller (Nylon)(standard)	\$63.98
4	1	0402-9100P	Impeller (Polypropylene)(9403S std)	\$70.63
5	1	1720-0083	O-ring	\$4.54
6	1	2120-0008	Mechanical Seal (Buna-N)	\$38.96
6	1	3430-0332	Mechanical Seal - Kit Only	\$75.70
6	1	3430-0589	Mechanical Seal (Silicon Carbide) - Kit Only	\$293.94
8	1	1410-0056	Slinger Ring	\$1.67
9	1	0750-9200C3	Mounting Flange	\$229.32
9	1	0756-9200S	Mounting FLange (Model 9403S)	\$808.33
10	1	6031-0252	Nameplate - Not Available	N/A
11	4	2210-0020	Bolt	\$1.23
11	4	2210-0125	Bolt (Model 9403S)	\$2.36
12	3	2000-0010	Ball Bearing	\$13.75
13	1	1610-0015	Key	\$2.36
14	1	3430-0844	Pump Shaft	\$177.38
15	1	1610-0004	Key	\$2.27
16	1	1820-0013	Bearing Retainer	\$1.60
17	1	1700-0100	Gasket	\$6.28
18	1	0703-9400D	Pedestal Bracket	\$423.17

REF NO.	QTY REQ'D	PART NO.	DESCRIPTION	LIST PRICE
19	2	2001-0006	Driver Shaft Bearings	\$27.97
20	1	1810-0012	Driver Shaft Bearing Retainer Ring	\$2.57
21	1	1410-0094	Bearing Spacer	\$43.39
22	1	2840-0053	End Cap (label)	\$29.17
23	1	1820-0032	Bearing Bore Retaining ring	\$5.09
24	1	3115-0031	Driver Pulley (540 RPM)	\$425.70
24	1	3115-0032	Driver Pulley (1000 RPM)	\$376.29
24	1	3115-0033	Driver Pulley (1000 RPM, 1 3/4" Shaft)	\$489.05
25	1	1610-0033	Key (Driver Pulley)	\$10.25
25	1	1610-0034	Key (Driver Pulley, 1 3/4" Shaft)	\$2.86
26	1	1810-0031	Retaining Ring (Driver Pulley)	\$5.37
26	1	1810-0032	Retaining Ring (Dr. Pulley-1 3/4" Shaft)	\$12.12
27	1	0555-9400F1	Shaft - 540 RPM (3430-0207 kit used on 0555-9400F & 0556-9400F shafts)	\$520.73
27	1	0556-9400F	Shaft - 1000 RPM (3430-0207 kit used on 0555-9400F & 0556-9400F shafts)	\$660.10
27	1	0557-9400F	Shaft - 1 3/4" 1000 RPM (3430-0190 kit used on 0557-9400F shaft)	\$980.64
28	1	0555-9400F1	Shaft-540 Quick Coupler	\$520.73
28A	3	3250-0004	Locking Ball	\$1.63
28B	1	1900-0115	Collar Spring	\$25.86
28C	1	1400-0021	Collar	\$81.09
29	1	3430-0843	Shaft Kit (1" Solid) *REPLACES 0503-9400	\$244.53
30	1	3115-0034	Driven Pulley (5/8" Diameter Bore)	\$162.17
31	2	2230-0003	Set Screw for Driven Pulley	\$1.23
32	1	0706-9400C	Idler Bracket (Cast Iron Pumps)	\$122.58
33	1	2405-0003	Grease Zerk Fitting - Not Available	N/A
34	1	1810-0036	Retaining Ring (Idler Bracket, Cast Iron)	\$6.83
35	1	3115-0036	Idler Pulley	\$71.27
36	1	1410-0095	Spacer (Idler Pulley)	\$10.14
37	1	1820-0013	Retaining Ring (Idler Pulley)	\$1.60
38	1	1900-0156	Torsion Spring (Idler for Cast Iron)	\$22.65
39	1	2210-0111	Idler Bolt / Shaft	\$4.66
40	1	2840-0075	Belt Shield	\$37.31
41	1	2840-0076	Belt Shield	\$37.31
42	1	1520-0062	Bracket for Belt Shield	\$22.02
43	1	2210-0021	Attachment Bolt for Shield	\$1.25
44	4	2240-0017	Assembly Bolts for Shield	\$1.39
45	4	2252-0002	Assembly Nuts for Shield	\$1.33
46	1	3100-0006	Poly V-Belt (540 RPM)	\$110.86
46	1	3100-0005	Poly V-Belt (1000 RPM)	\$99.14
47	2	2210-0055	Bolts for Pump to Bracket	\$1.04
48	2	2260-0006	Lock Washers for Bracket Bolts	\$1.06
49	2	1600-0070	Roll Pin	\$1.25

### 9403C-540, 9403S-540

RPM	GPM at 20 PSI	GPM at 30 PSI	GPM at 40 PSI	GPM at 50 PSI	GPM at 60 PSI	GPM at 70 PSI	GPM at 80 PSI	GPM at 90 PSI	GPM at 100 PSI
450	107	99	86	50					
500	121	116	106	93	76	42			
540	129	127	120	111	98	80	50		
600	140	138	135	130	121	112	94	73	40

### 9403C-1000, 9403S-1000

RPM	GPM at 20 PSI	GPM at 30 PSI	GPM at 40 PSI	GPM at 50 PSI	GPM at 60 PSI	GPM at 70 PSI	GPM at 80 PSI	GPM at 90 PSI	GPM at 100 PSI
800	115	106	96	80	56				
900	129	127	120	111	98	80	50		
1000	140	139	137	133	128	119	100	76	46

### 9403C-540-SP

RPM	GPM at 10 PSI	GPM at 20 PSI	GPM at 30 PSI	GPM at 40 PSI	GPM at 50 PSI	GPM at 60 PSI	GPM at 70 PSI	GPM at 80 PSI	GPM at 90 PSI
500	114	113	101	83	60	27			
540	120	119	116	102	85	62	32		
600	120	120	120	119	110	97	78	54	24

### 9403C-1000-SP

RPM	GPM at 10 PSI	GPM at 20 PSI	GPM at 30 PSI	GPM at 40 PSI	GPM at 50 PSI	GPM at 60 PSI	GPM at 70 PSI	GPM at 80 PSI	GPM at 90 PSI
800	111	109	94	74	47	21			
900	120	119	116	102	85	62	32		
1000	120	120	120	119	110	97	78	54	24