

\*Neither Sprayer Specialties, Inc. nor the tank manufacturer(s) accept responsibility for lost or damaged product due to the failure of any of the tank(s), tank fitting(s), tank valve(s) or the installation of the for mentioned items.



**Cone Bottom Mix Tanks**

PART NUMBER	CAPACITY	DIMENSIONS (W x L x Ht)	LIST PRICE
SP00-2.5-RT	2.5 Gallon	15" x 7" x 14" Tall	\$92.81
ACE3CBT	3 Gallon	12" x 7" x 14" Tall	\$95.47
ACE3.5CBT	3.5 Gallon	11" W x 15" T (Cylinder)	\$93.66
SP0004-SQ5	4 Gallon	11" x 11" x 14" Tall	\$105.59
ACE5CBT	5 Gallon	11" x 11" x 18" Tall	\$143.38
ACE10CBT	10 Gallon	13" x 13" x 21" Tall	\$197.88



**Ace Roto-Mold**



**Spot Sprayer Tanks**

PART NUMBER	CAPACITY	DIMENSIONS (W x L x Ht)	LIST PRICE
SB00015SY	15 Gallon	16" x 34" x 13" Tall	\$109.28
SB00025SY	25 Gallon	18" x 36" x 17" Tall	\$139.83
SB00040	40 Gallon	24" x 36" x 19" Tall	\$168.12
SB00060	60 Gallon	24" x 36" x 26" Tall	\$217.90

\* Available in Yellow or White



**Rectangular Tanks**

PART NUMBER	CAPACITY	DIMENSIONS (W x L x Ht)	LIST PRICE
CRM008-REC	8 Gallon	12" x 16" x 15.5" Tall	\$142.98
ACE12RECT	12 Gallon	14" x 18" x 17" Tall	\$144.21
ACE26RECT	26 Gallon	18" x 25" x 19" Tall	\$234.25
ACE45RECT	45 Gallon	18" x 37" x 26" Tall	\$261.23
ACE50RECT	50 Gallon	19" x 38" x 20" Tall	\$342.68



**POLYWEST**  
liquid handling products

**Chemwash Emergency Wash Kit**  
The ChemWash Provides 6.6 gallons of fresh water for emergency rinsing. This package includes hoses, fittings, a cradle for mounting & a compartment for storing other safety related equipment.

**Chemwash Emergency Wash Kit**

PART NUMBER	DESCRIPTION	LIST PRICE
MHCW/Y	6.6 Gallon Emergency Wash Kit	\$314.50

**NORWESCO**



**Flat Bottom Utility Tanks**

PART NUMBER	CAPACITY	OUTLET FITTING	DIMENSIONS (W x L x Ht)	LIST PRICE
NOR7UT	7 Gallon	N/A	9" x 14" x 18" Tall	\$99.58
NOR16UT	16 Gallon	N/A	14" x 20" x 17" Tall	\$117.05
NOR20UT	20 Gallon	N/A	11" x 15" x 34" Tall	\$183.45
NOR26UT	26 Gallon	3/4"	18" x 25" x 20" Tall	\$218.61
NOR35UT	35 Gallon	1"	15" x 15" x 43" Tall	\$223.46
NOR45UT	45 Gallon	1"	18" x 38" x 22" Tall	\$246.18
NOR50UT	50 Gallon	1"	19" x 38" x 23" Tall	\$322.50
NOR52UT	52 Gallon	1"	24" x 43" x 15" Tall	\$372.22
NOR55UT	55 Gallon	1"	18" x 18" x 44" Tall	\$296.32
NOR68UT	68 Gallon	1"	27" x 42" x 17" Tall	\$431.31
NOR100UT	100 Gallon	1"	27" x 43" x 29" Tall	\$485.06
NOR150UT	150 Gallon	1"	36" x 48" x 29" Tall	\$577.63
NOR200UT	200 Gallon	1"	36" x 48" x 38" Tall	\$710.89



**NORWESCO**  
**25 Gallon Foamer Tank**

Sprayer Specialties Foamer Tank  
Available only in Yellow

**Foamer Tank**

PART NUMBER	DESCRIPTION	LIST PRICE
SOL25FMT	25 Gallon SSI Foamer Tank	\$323.21

**Ace Roto-Mold**  
A DIVISION OF DEN HARTOG INDUSTRIES, INC.



**Rectangular Sloped Bottom Tanks**

PART NUMBER	CAPACITY	DIMENSIONS (W x L x Ht)	LIST PRICE
ACE56RECT	56 Gallon	20" x 38" x 26" Tall	\$296.94

Used as the Rinse Tank on Sprayer Specialties XLRD & VLU Trailer Sprayers. Stock Color is Gray

**Ratchet Straps on Page 391**

\*Neither Sprayer Specialties, Inc. nor the tank manufacturer(s) accept responsibility for lost or damaged product due to the failure of any of the tank(s), tank fitting(s), tank valve(s) or the installation of the for mentioned items.

## Ace Roto-Mold PCO Tanks

PCO tanks can be selected for stationary or transportable applications both indoors and outdoors. The tanks have a rounded bottom for best fluid drainage and a 2" deep sump option is also available. PCO tanks must be securely anchored for use in transportable applications and galvanized steel bands are available for this purpose. PCO300 comes with an internal baffle for support and fluid control. The tanks are manufactured from medium-density polyethylene with U.V. inhibitors and designed for containment of liquids of up to 1.7 specific gravity.

To order a PCO tank with a sump, add "S" to the end of the Part Number.  
Example: PCO50S

### PCO Tanks

PART NUMBER	CAPACITY	OUTLET FITTING	DIMENSIONS (W x L x Ht)	LIST PRICE
*PCO30	30 Gallon	1"	19" x 25" x 23" Tall	\$286.52
**PCO35	35 Gallon	1"	16" x 35" x 21" Tall	\$289.11
PCO50	50 Gallon	1"	19" x 38" x 23" Tall	\$302.35
PCO100	100 Gallon	1"	30" x 38" x 29" Tall	\$481.46
PCO150	150 Gallon	1-1/4"	37" x 48" x 29" Tall	\$580.55
PCO200	200 Gallon	1-1/4"	37" x 48" x 38" Tall	\$728.52
PCO300	300 Gallon	2"	37" x 69" x 40" Tall	\$1,356.02

\*PCO30 is manufactured by Norwesco; NOT available with a sump  
\*\*PCO35; NOT available with a sump



### Low Profile Tanks

PART NUMBER	CAPACITY	OUTLET FITTING	DIMENSIONS (W x L x Ht)	LIST PRICE
LP0050-RT	50 Gallon	1"	24" x 43" x 15" Tall	\$368.19
LP0068-RT	68 Gallon	1"	26" x 42" x 17" Tall	\$430.56
LP0110-RT	110 Gallon	1"	35" x 48" x 19" Tall	\$532.27
LP0200-RT	200 Gallon	1"	48" x 60" x 19" Tall	\$682.68
LP0300-RT	300 Gallon	1"	48" x 80" x 21" Tall	\$957.60

## NORWESCO

### Low Profile Tanks

PART NUMBER	CAPACITY	OUTLET FITTING	DIMENSIONS (W x L x Ht)	LIST PRICE
NOR110LP	110 Gallon	1"	35" x 48" x 18" Tall	\$552.42
NOR300LP	300 Gallon	N/A	56" x 95" x 19" Tall	\$974.74
NOR500LP	500 Gallon	N/A	52" x 130" x 23" Tall	\$1,362.79



## Ace Roto-Mold Pickup Tanks - Round

PART NUMBER	CAPACITY	OUTLET FITTING	(Diameter x Ht) DIMENSIONS	LIST PRICE
ACE200PU	200 Gallon	2"	52" x 30" Tall	\$514.20
ACE350PU	350 Gallon	2"	62" x 34" Tall	\$785.19
ACE450PU	450 Gallon	2"	62" x 41" Tall	\$913.61

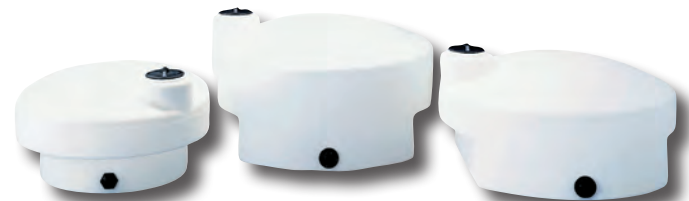
## Pickup Tanks - Low Profile

PART NUMBER	CAPACITY	OUTLET FITTING	(L x W x H) DIMENSIONS	LIST PRICE
ACE205PU	205 Gallon	2"	52" x 52" x 26"	\$716.09
ACE305PU	305 Gallon	2"	60" x 58" x 30"	\$857.04



## Pickup Tanks - Space Saver

PART NUMBER	CAPACITY	OUTLET FITTING	(W x L x Ht) DIMENSIONS	LIST PRICE
SSPU0200-70	200 Gallon	2"	29" x 70" x 42" Tall	\$774.95
SSPU0300-70	300 Gallon	2"	41" x 70" x 42" Tall	\$1,052.53
SSPU0400-70	400 Gallon	2"	52" x 70" x 42" Tall	\$1,123.71



## NORWESCO

### Pickup Tanks

PART NUMBER	CAPACITY	OUTLET FITTING	(L x W x H) DIMENSIONS	LIST PRICE
NOR210PU	210 Gallon	2"	51" x 60" x 29"	\$547.84
NOR325PU	325 Gallon	2"	62" x 62" x 33"	\$836.68
NOR425PU	425 Gallon	2"	65" x 65" x 39"	\$914.91



## Ace Roto-Mold LOW PROFILE Rectangular Poly Tanks

\*Neither Sprayer Specialties, Inc. nor the tank manufacturer(s) accept responsibility for lost or damaged product due to the failure of any of the tank(s), tank fitting(s), tank valve(s) or the installation of the for mentioned items.



**NORWESCO**

These tanks have been designed with residential and commercial applicatons in mind. The dimensions of the tanks allow them to fit through a conventional doorway. The design of these tanks allow them to be free standing / self-supporting and eliminates the need for a steel frame.

**Vertical Ribbed Tanks**

PART NUMBER	CAPACITY	OUTLET FITTING	DIMENSIONS (W x L x Ht)	LIST PRICE
NOR400VR	400 Gallon	N/A	33" x 43" x 84" Tall	\$1,878.70
NOR600VR	600 Gallon	N/A	35" x 58" x 84" Tall	\$3,271.81

These tanks have been designed with residential and commercial applicatons in mind. The dimensions of the tanks allow them to fit through a conventional doorway. The design of these tanks allow them to be free standing / self-supporting and eliminates the need for a steel frame.



**100 Gallon Slender Tank**

PART NUMBER	CAPACITY	OUTLET FITTING	DIMENSIONS (W x L x Ht)	LIST PRICE
NOR100LT	100 Gallon	1 1/4"	22" x 38" x 45" Tall	\$386.11

**NORWESCO**

These tanks have been designed with residential and commercial applicatons in mind. The dimensions of the tanks allow them to fit through a conventional doorway. The design of these tanks allow them to be free standing / self-supporting and eliminates the need for a steel frame.



**Free Standing Tank**

Part#	Capacity	Fitting	W x Ht x Lt	Price
NOR250RECT	250 Gallon	1-1/4"	29" x 40" x 62"	\$962.82
NOR300RECT	300 Gallon	1-1/4"	29" x 48" x 62"	\$976.53
NOR400RECT	400 Gallon	1-1/4"	30" x 68" x 63"	\$1,540.74
NOR500RECT	500 Gallon	1-1/4"	31" x 70" x 74"	\$1,655.69
NOR750RECT	750 Gallon	2"	35" x 85" x 82"	\$2,162.64
NOR1000RECT	1000 Gallon	2"	40" x 89" x 92"	\$2,657.31



Standard Tank on Sprayer Specialties VB Sprayers  
See Page 439 for complete units

Dimensions: 84 1/2" Long x 23 1/2" Tall  
VB100S Bottom Width 18" / Top Width 9"  
VB100R Bottom Width 9" / Top Width 18"

**Wedge Tank**

**SPRAYER SPECIALTIES WEDGE TANK**

Part#	Capacity	W x L x H	Price
VB100S-T	100 Gallon Replacement Tank (V-Sander Style)		\$996.03
VB100R-T	100 Gallon Replacement Tank (Tailgate Style)		\$996.03



**Bulk Oil Stations**

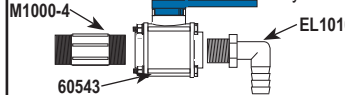
Includes: PowderCoated Steel Stand, Spill Tray & Valves  
Each Tank is 70 Gallons

**BULK OIL STATIONS**

PART NUMBER	DESCRIPTION	LIST PRICE
ACE70LT-STACK	70 Gallon Tank Only	\$478.71
BOS-70C	1 Tank System, 70 Gallons	\$1,308.72
BOS-140C	2 Tank System, 140 Gallons	\$1,711.00
BOS-210C	3 Tank System, 210 Gallons	\$2,113.28
BOS	Bulk Oil Steel Only	\$912.39

**Single-Tank Plumbing**

Also on Base Tank on Multi-Tank Systems



**Multi-Tank Plumbing**

Included Per Tank on Multi-Tank Systems

