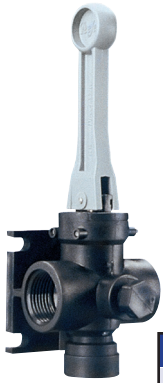


DirectoValve® Manual Control Valve

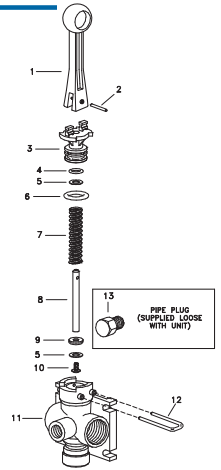


Model 6B

- Molded of corrosion resistant materials; all wetted parts are polypropylene, stainless steel and polyethylene.
- Maximum pressure of 150 PSI.
- Large capacity, 12 GPM pressure drop.
- Molded-in mounting flange and 1/4" NPT gauge port.
- Valves can be ganged together using hex nipple for multiple boom control.
- Easily repaired without removing valve from spray line.

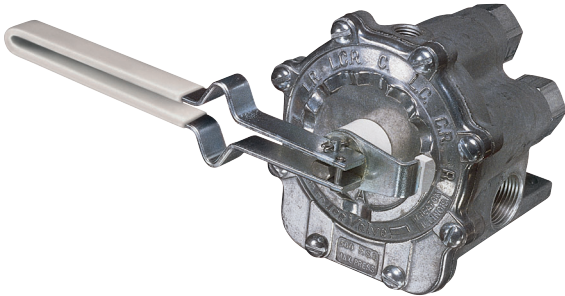
Part#	Description	Price
AA6B	Manual Control Valve	\$60.78

Item No.	Part No.	Description	Price
1	CP36301-NY	Handle, Nylon	\$6.89
2	CP36308-SS	Groove Pin, S.S.	\$1.55
3	CP36302-PP	Body Insert, Poly	\$6.20
*4	CP7717-2/108-VI	O-Ring, Viton	\$6.20
5	CP36307-PPB	Washer, Poly (2)	\$2.26
*6	CP7717-2/209-VI	O-Ring, Viton	\$10.26
7	CP36306-302SS	Spring, S.S.	\$4.08
8	CP36304-SS	Stem, S.S.	\$7.34
*9	CP38726-VI	Shut-Off Washer	\$8.80
10	CP38725-SS	Phillips Head Screw	\$2.36
11	CP36303-PP	Body, Polypropylene	\$20.21
12	CP36309-302SS	Retaining Clip, S.S.	\$3.94
13	8400-1/4-PPB	Pipe Plug (NPT)	\$1.75
PK-AB6B-KIT Spare Parts Kit (Includes all items marked •)			\$25.50



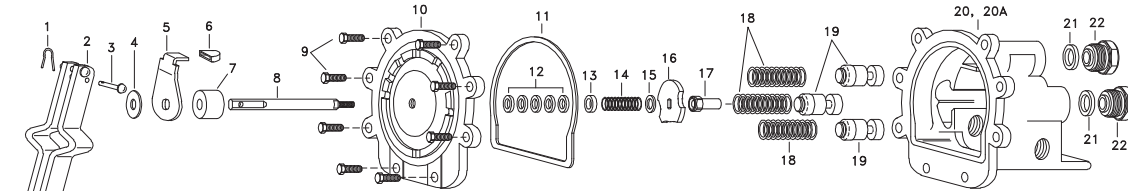
TeeValve® Control Valves

Model AA17L For Selective Control of Three-Section Boom Sprayers at Pressures up to 300 PSI.



- Use to open any of three boom sections lines in any desired combination.
- Raise lever to open, lower lever to close the valve without changing the indexed position.
- Aluminum construction with stainless steel and plastic internal parts for maximum corrosion resistance.
- 3/4" Inlet/Outlet, 3 Boom Outlet & Accessory Outlet

Part#	Description	Price
AA17L	Manual Control Valve	\$154.39



Item No.	Part No.	Description	Price
*1	CP8012-1/2-SS	1/16" x 1/2" Cotter Pin	\$1.90
2	CP6849-1-Izp	Handle and Rivet Sub-Asb	\$11.24
*3	CP7206-Izp	Rivet, Steel, Zinc Plated	\$6.68
*4	CP6976-Izp	Handle Washer, Steel, Zinc Plated	\$4.79
5	CP12128-Izp	Selector Shield, Steel, Zinc Plated	\$7.43
*6	CP12127-CE	Selector Shield Tip, Celcon	\$4.92
7	CP12129-CE	Spacer, Celcon	\$6.62
8	CP6972-SS	Main Stem, Stainless Steel	\$13.25
*9	CP20607-Izp	Hex Head Screw (1/4-20x3/4) (8 Req'd)	\$2.75
10	CP12126-AL	Cover Plate, Aluminum	\$62.02
*11	CP6975-BU	Gasket, Buna-N	\$10.71
*12	CP5809-LEA	Packing, Thermo-Leather (5 Req'd)	\$1.90

Item No.	Part No.	Description	Price
13	CP12130-SS	Packing Gland, Stainless Steel	\$9.50
14	CP7254-SS	Main Spring, Stainless Steel	N/A
15	CP7987-SS	Washer, Stainless Steel	N/A
16	CP6971-AL	Selector Cam, Aluminum	\$5.36
17	CP6973-SS	Guide Nut, Stainless Steel	N/A
18	CP6959-SS	Valve Spring, Stainless Steel (3 Req'd)	\$4.01
19	CP6956-CE	Valve Stem, Celcon (3 Req'd)	\$4.94
20	CP6934-3/4-AL	Body, Aluminum (For AA17L)	\$72.26
*21	CP6958-POL	Seat Plate, Polyethylene (3 Req'd)	\$8.20
22	CP7902-AL	Outlet Adapter, Aluminum (3 Req'd)	\$12.04
PK-AB17-KIT Spare Parts Kit (Includes all items marked with •)			\$42.84

CATALOG IS LIST PRICE PLEASE APPLY DISCOUNT

TeeJet TeeValve AA17L Replacement Parts



Model 23120

- 302 stainless steel spring and EPDM O-ring
- Excellent chemical resistance.
- 1/4" port for pressure gauge pipe plug included.

Part No.	Description	Price
23120-1/2-PP	1/2" Inlet/Outlet	\$41.15
23120-3/4-PP	3/4" Inlet/Outlet	\$41.15
PK-AB-23120-KIT	Repair Kit	\$20.31



Model 6815

- Available with pressure ratings 50, 300 or 700 PSI
- Brass Hardened Stainless Steel
- * Specify PSI when ordering

Part No.	Description	Price
6815-1/2-*	Brass, 1/2" Ports	\$87.69
6815-3/4-*	Brass, 3/4" Ports	\$87.69
6815-1/2-HSS-*	Hardened S.S. 1/2"	\$123.90
6815-3/4-HSS-*	Hardened S.S. 3/4"	\$123.90
PK-AB6815-300-KIT	Repair Kit	\$19.08



Model 110

- Brass
- 150, 300 and 700 lb PSI
- 1/4" & 3/8" connections

Part#	Price
AA110-1/4-*	\$66.01
*50, 150, 300, 700 PSI	
AA110-3/8-*	\$66.01
*50, 150, 300, 700 PSI	



Model 8460

- Polypropylene & Aluminum
- 50 or 300 PSI
- 3/4" or 1/2" connections

Part#	Price
8460-1/2-*	\$75.56
8460-3/4-*	\$75.56
PK-AB8460-KIT	Repair Kit \$27.27